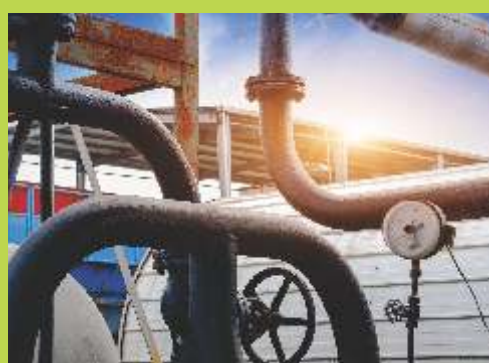
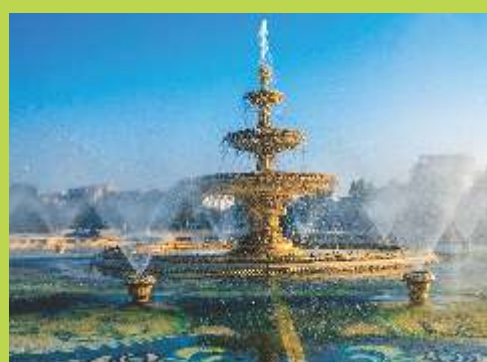




Enriching Lives



**KSW**  
0.5 - 1.0 HP,  
SHALLOW WELL  
PUMPS



**KIRLOSKAR BROTHERS LIMITED**  
A Kirloskar Group Company

# KSW

## 0.5 - 1.0 HP, Shallow Well Pumps

Suction lift capacity of up to 8.5 metres combined with a high head enable KSW pumps to suitably draw water from shallow wells for a variety of applications, including water supply for residences, irrigation of small farms and gardens, storage tanks, automobile washing facility and water circulation systems.

High performance design and precise manufacturing process enables the pump to provide optimum efficiency, which translates into low operational costs and significant savings for customers. The pump construction includes specially-sourced materials that offer high tensile strength and anti-corrosive properties. Additional features such as low-voltage operation and thermal overload protector shields the pump from electrical damage. Available from Kirloskar Brothers, the leader in pump design and manufacturing, you are assured of the product's excellence and performance reliability.

### PRODUCT SNAPSHOT

#### Range and Technical Specification

Head	: 5 to 40 metres
Capacity	: 3,600 to 300 LPH
Power Rating	: 0.37 to 0.75 kW / 0.5 to 1.0 HP
Voltage Range	: 180 to 240 Volts (Single phase)

#### Construction Material

Impeller	: Cast Iron
Motor Body	: Aluminum Extruder
Delivery Casing	: Cast Iron
Pump Shaft	: Carbon Steel



#### Suitable for high head applications

The KSW pump has been designed to deliver large volumes of water for high head applications, helping customers achieve high turnaround time and productivity.



#### High efficiency over wide ranging applications

Employing innovations in design and manufacturing, the pump provides optimum efficiency that result in significant cost savings for customers.



#### Aluminium motor body

The pump features an aluminium motor body that provides high resistance to corrosion and lowers its overall weight for greater portability.



#### Suction lift up to 8.5 metres with high head

The pump has suction lift capability up to 8.5 meters with a very high head, allowing you to pump water at high volumes for a variety of applications.



#### Wide voltage range – to offset fluctuations

The pump motor is designed to perform optimally during low voltage and fluctuations due to its ability to adapt to a wide input voltage range of 180 to 240 volts.



#### Thermal overload protector for motor safety

The pump motor features a Thermal Overload Protector that protects the motor from overloading, and thereby shields the motor and associated circuit from the effects of faulty current.



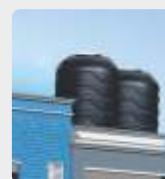
#### Handle to enhance grip and portability

A handle attached to the pump allow users to carry the pump anywhere, adding to its portability and convenience of use.

### APPLICATIONS

Water supply for

- Bungalows and hotels
- Small farms, lawns and gardens
- Water circulating systems
- Car washing facilities
- Fountains



### PERFORMANCE CHART

PUMP MODEL	POWER RATING		PIPE SIZE (mm)		TOTAL HEAD IN METERS							
	kW	HP	SUC.	DEL.	5	10	15	20	25	30	35	40
	DISCHARGE IN LITRES PER HOUR											
KSW-05	0.37	0.5	25	25	3300	3120	2820	2400	1980	1500		
KSW-10	0.75	1.0	25	25			3600	3300	2400	1800	900	300

NOTE: Performance applicable to liquid of specific gravity 1 and viscosity as of water.

**Global Headquarters:**  
'Yamuna', S.No. 98/3-7,  
Baner, Pune - 411045, India.  
Phone : +91-20-27214444  
Email: kblin@kbl.co.in

**Registered Office:**  
Udyog Bhavan, Tilak Road,  
Pune - 411 002, India.  
Phone: +91-20-24440156  
Fax: +91-20-24440156

#### OUR COMPANIES



Service Toll-Free No.  
**1800 103 4443**  
[www.kirloskarpumps.com](http://www.kirloskarpumps.com)

Copyright 2016 Kirloskar Brothers Limited (India). All Rights Reserved. "Kirloskar Proprietary Limited is the owner of the Trade mark and Trade name 'Kirloskar' and also other marks, logos, names derived out of the mark 'Kirloskar' or used in conjunction with the mark 'Kirloskar'. As such all such marks, names, logos, used herein are being used under permitted use granted.