

Kirloskar Brothers Limited (KBL) is a world class pump manufacturing company with expertise in engineering and manufacture of systems for fluid management. Established in 1888 and incorporated in 1920, KBL is the flagship company of the \$ 2.1 billion Kirloskar Group. KBL, a market leader, provides complete fluid management solutions for large infrastructure projects in the areas of water supply, power plants, irrigation, oil & gas and marine & defence. We engineer and manufacture industrial, agriculture and domestic pumps, valves and hydro turbines.

In 2003, KBL acquired SPP Pumps, United Kingdom and established SPP INC, Atlanta, USA, as a wholly owned subsidiary of SPP, UK to expand its international presence. In 2007, Kirloskar Brothers International B.V., The Netherlands and Kirloskar Brothers (Thailand) Ltd., a wholly owned subsidiary in Thailand, were incorporated. In 2008, KBL incorporated Kirloskar Brothers Europe B.V. (Kirloskar Pompen B.V. since June 2014), a joint venture between Kirloskar International B.V. and Industrial Pump Group, The Netherlands. In 2010, KBL further consolidated its global position by acquiring Braybar Pumps, South Africa. SPP MENA was established in Egypt in 2012. In 2014, KBL acquired SyncroFlo Inc., the largest independent fabricator of commercial and municipal domestic water booster pumps.

To further strengthen its global position, in 2015, Kirloskar Pompen B.V. acquired Rodelta Pumps International, The Netherlands.

KBL has joint venture cooperation with Ebara, Japan since 1988 for the manufacture of API 610 standard pumps. Kirloskar Corrocoat Private Limited is a joint venture cooperation with Corrocoat, UK since 2006. KBL acquired The Kolhapur Steel Limited in 2007 and Hematic Motors in 2010.

KBL has eight manufacturing facilities in India at Kirloskarvadi, Dewas, Kondhapuri, Shirwal, Sanand, Kaniyur, Kolhapur and Karad. In addition, KBL has global manufacturing and packaging facilities in Egypt, South Africa, Thailand, The Netherlands, United Arab Emirates, United Kingdom and United States of America. KBL has 12,700 channel partners in India and 80 overseas and is supported by best-in-class network of Authorised Centres and Authorised Refurbishment Centres across the country.

All the manufacturing facilities at KBL are certified for ISO 9001, ISO 14001, ISO 50001, BS OHSAS 18001 and SA8000. In addition, the Kirloskarvadi plant is also certified for N & NPT Stamp. KBL's corporate office in Pune is certified for ISO 9001 & Sa8000.

The factories deploy Total Quality Management tools using European Foundation for Quality Management (EFQM) model. The Kirloskarvadi plant of KBL is a state-of-the-art integrated manufacturing facility having Asia's largest hydraulic research centre with testing facility upto 5000 kW and 50,000 m³/hr.

KBL is the ninth pump manufacturing company in the world to be accredited with the N and NPT certification by American Society of Mechanical Engineers (ASME).

Pumps | Valves | Hydro Turbines | Turnkey Projects

Water Resource Management | Irrigation | Power | Industry | Oil & Gas | Marine & Defence |
Building & Construction | Distribution (Small Pumps) | Valves | Customer Service & Spares

KIRLOSKAR BROTHERS LIMITED

A Kirloskar Group Company

Registered Office: Udyog Bhavan, Tilak Road , Pune 411002. Tel: +91(20)24440770, Global
Headquarters: "Yamuna", Survey No. 98/(3.7), Baner, Pune 411045. Tel: +91(20)27214444,
Email: marketing@kbl.co.in, Website: www.kirloskarpumps.com, CIN No.: L29113PN1920PLC000670

OUR COMPANIES



Kirloskar Brothers Limited reserve the right to make alteration from time to time and such our products / equipments may differ from that detail in this publication. For latest information you may get in touch with our Regional Sales Offices.

STFVL-07-2016-00



Enriching Lives

SWING TYPE FOOT VALVE

AS PER IS 4038



KIRLOSKAR BROTHERS LIMITED

A Kirloskar Group Company

SWING TYPE FOOT VALVES

- Widely accepted by Municipal Corporations, Irrigation Authorities, Water Supply Authorities, National Thermal Power Corporation and Industrial users.
- Designed as per latest editions of IS 4038 specifications.

APPLICATIONS

- Foot Valves are Installed in suction side of the pumps to avoid flow reversal from pump to the sump, in order to maintain pump priming.
- They also prevent entry of foreign particle into pump through suction pipe. These valves are suitable for having clear water within the limits specified by IS: 4038.

SPECIAL FEATURES

- Excellent design features.
- Rigid and sturdy design with minimum loss of head across the valve.
- Perfectly flat seating faces for good sealing.
- Long service life.

Material of Construction

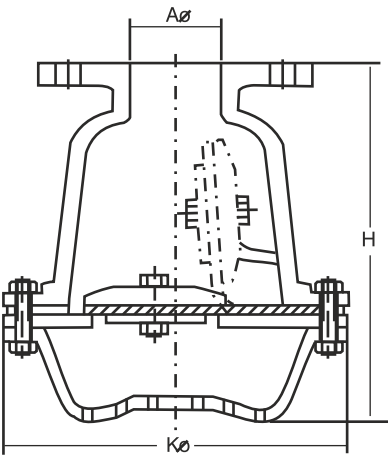
Size	Housing,Seat, Strainer	Door	Door Plate	Hinge Pin	Door Face
50mm - 150mm	Cast Iron	Cast Iron	Cast Iron	NA	Natural Rubber with Reinforcement of cotton canvas
200mm - 450mm	Cast Iron	Cast Iron	Cast Iron	SS AISI 410	
500mm & 600mm	MS (Fab.)	MS (Fab.)	MS (Fab.)	SS AISI 410	

1. For Special Material of construction, Contact Design Office.
2. Protective coating for Housing, Seat, Strainer, Door, Doorplate can be offered as per requirement.

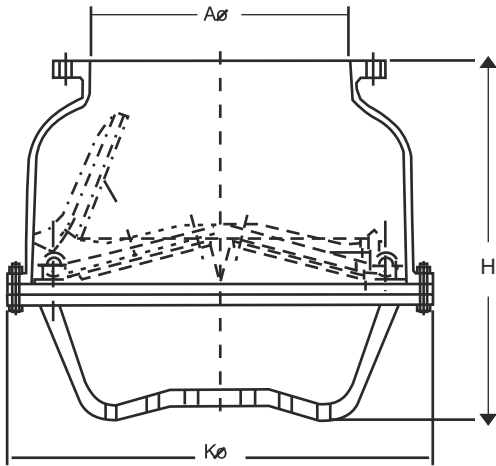
Technical Specification

Design and Testing Standard	
Design and Manufacturing Standard	IS:4038
Testing Standard	IS:4038
Size Range	50 mm to 600mm
Pressure Rating	PN 0.2
1.Higher Pressure Rating Contact Design Office	

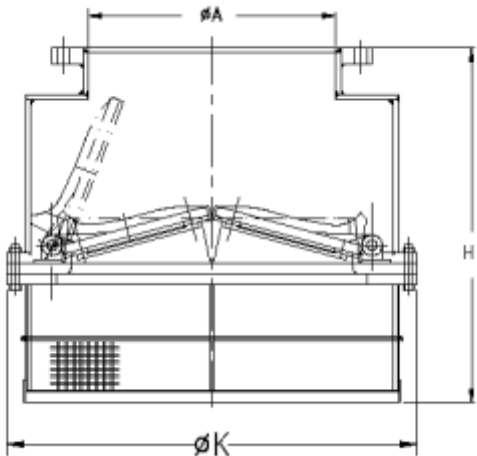
General Out line Drawing & Cut View



VIEW FOR VALVE SIZES
UPTO & INCLUDING 150 mm



VIEW FOR VALVE SIZES
200 mm & ABOVE



VIEW FOR FABRICATED VALVE SIZES
500mm & 600mm

GENERAL OUT LINE DIMENSIONS

Valve Size (A Dia.) NB	H Approx.	K Dia. Approx.	No. Of Doors
50 mm	150	122	01
65 mm	185	136	
80 mm	205	161	
100 mm	225	165	
125 mm	245	212	
150 mm	310	290	
200 mm	405	436	02
250 mm	490	478	
300 mm	532	553	
350 mm	636	665	
400 mm	693	740	
450 mm	693	740	
500 mm (Fabricated)	835	860	
600 mm (Fabricated)	935	1000	

All dimensions are in mm.

END CONNECTIONS

Availability	Flange Drilling Standard
Standard Supply	IS:1538 Table 4 and 6
Optional	BSEN 1092-2 PN 10,PN 16 BS:10- Table D/E/F IS:1538 Table 5 ANSI B 16.1 / 16.5 IS:6392

0

HYDROSTATIC TEST PRESSURES

Availability	Size Range	Testing Standard and Pressure Rating (MPa)	Hydrostatic test Pressures Kg/cm2 (MPa)	
			Body	Seat
Standard Supply	50 to 600mm	IS:4038 PN0.2	6.12 (0.6)	2.04 (0.2)